

SIERRA PINES CAMP

Guide to area hikes and nature walks

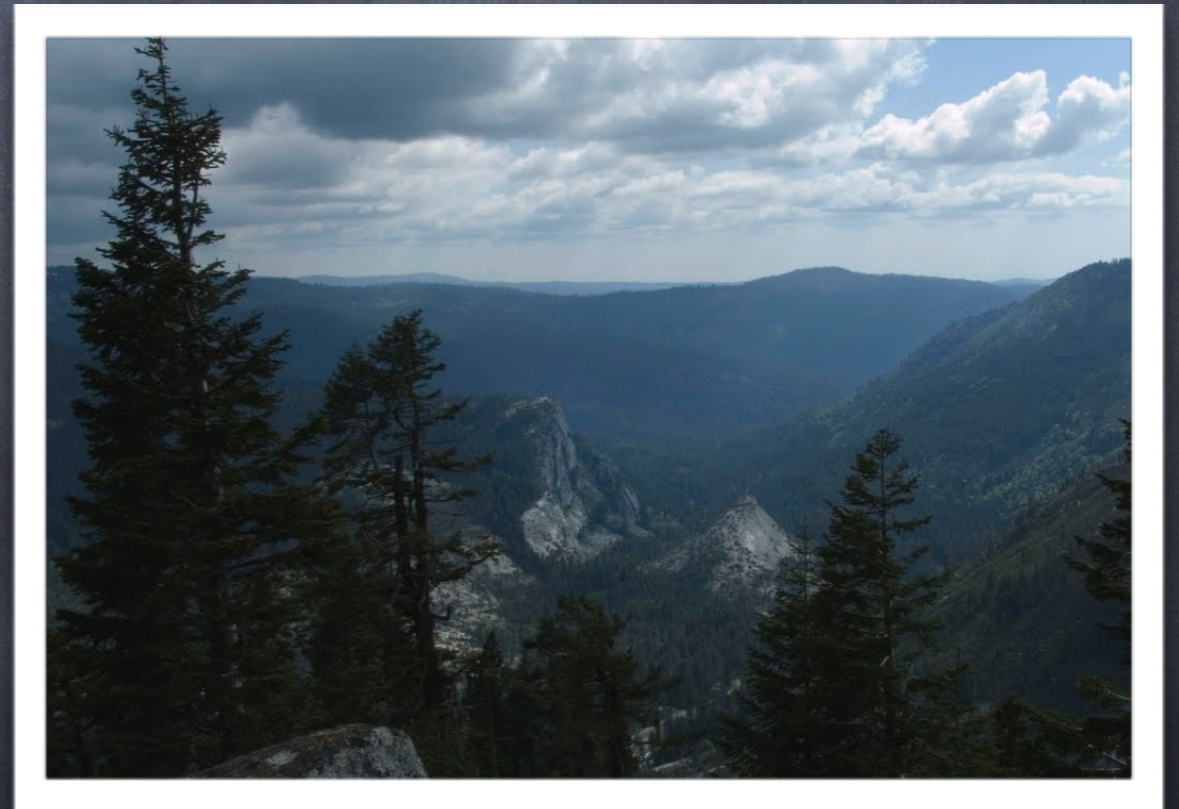
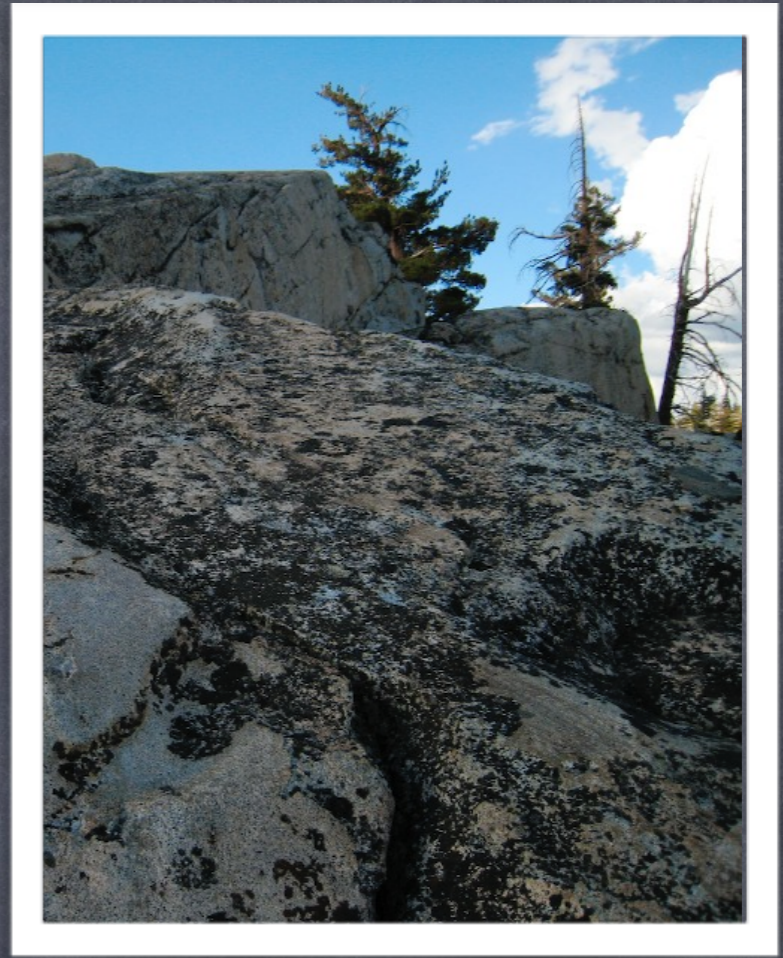
Mt. Ralston

- Distance from camp: **zero**
(leave from camp)
- Ability Level: **difficult**
- Length: 6 miles, Full day.
- Elevation Gain: 2,735 ft
- Ages: teens - adult
- More Details:
www.everytrail.com/guide/mt-ralston-peak-lake-tahoe
- Description: A great hike if you don't have transport for your group to another trailhead. From the peak, you will have stunning views of Lake Tahoe, Echo Lakes, Mount Tallac, and Desolation Wilderness.



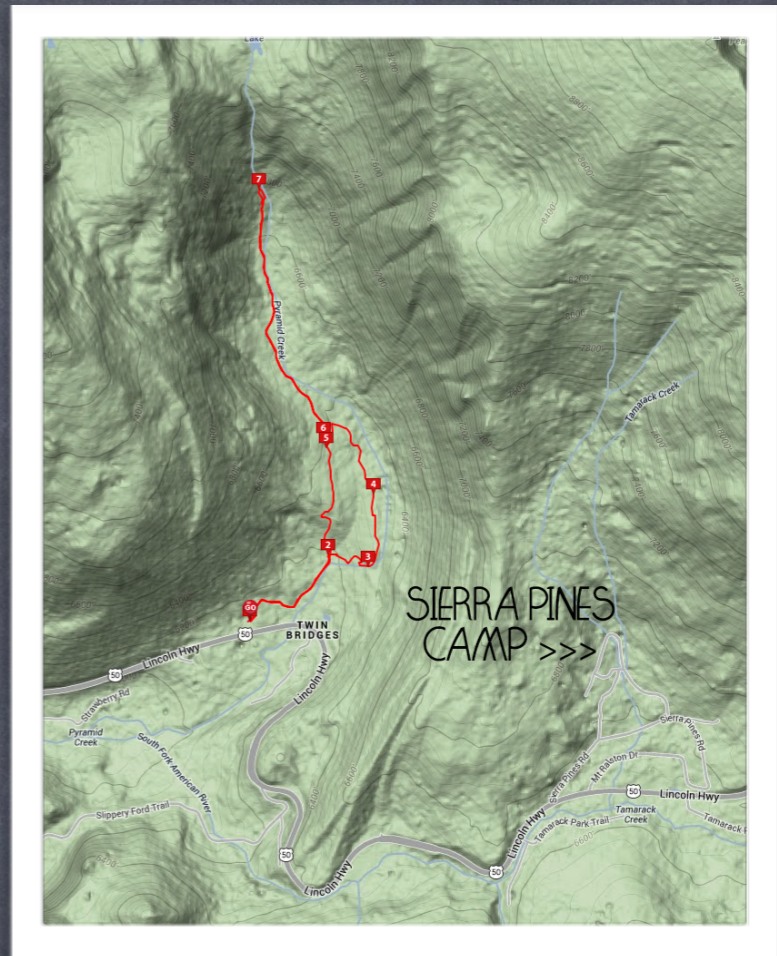
Inspiration Point

- Distance from camp: **zero**
(leave from camp)
- Ability Level: **moderate**
- Length: 4 miles. Half day.
- Elevation Gain: 1,500 ft
- Ages: young teens and up
- More Details:
www.everytrail.com/guide/mt-ralston-peak-lake-tahoe
- Description: This is a cutoff, about half way up the same trail to Mt. Ralston. If you go to the left, there is a look out over the valley with a view of Horsetail Falls.



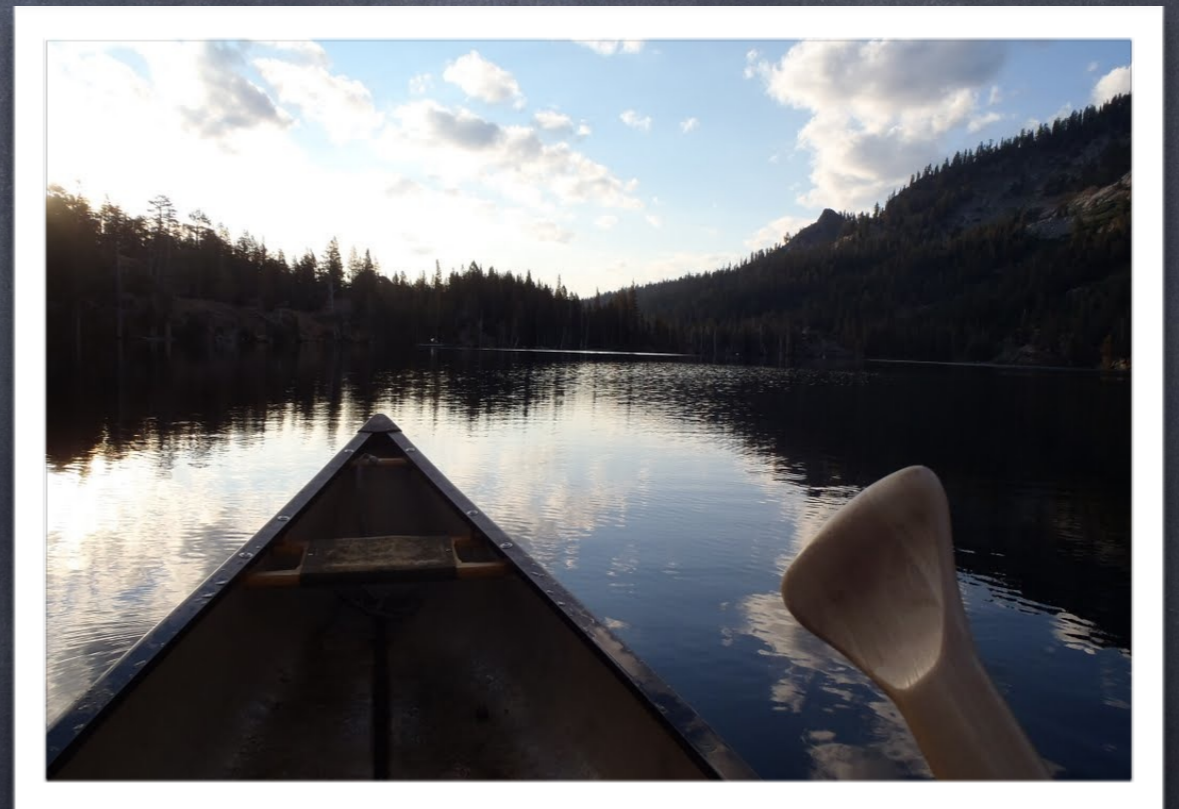
Horsetail Falls

- Distance from camp: 2.2 miles
- Ability Level: easy - moderate
- Length: 3 miles, 2 - 3 hours
- Elevation Gain: 600 ft
- Ages: All ages
- Best time: Spring or early summer
- More Details:
www.everytrail.com/guide/horsetail-falls-lake-tahoe
- Description: Mellow hike along the creek up to a beautiful waterfall. Parking fee \$5 per car, or find a free spot nearby along the highway



Echo Lake to Sierra Pines

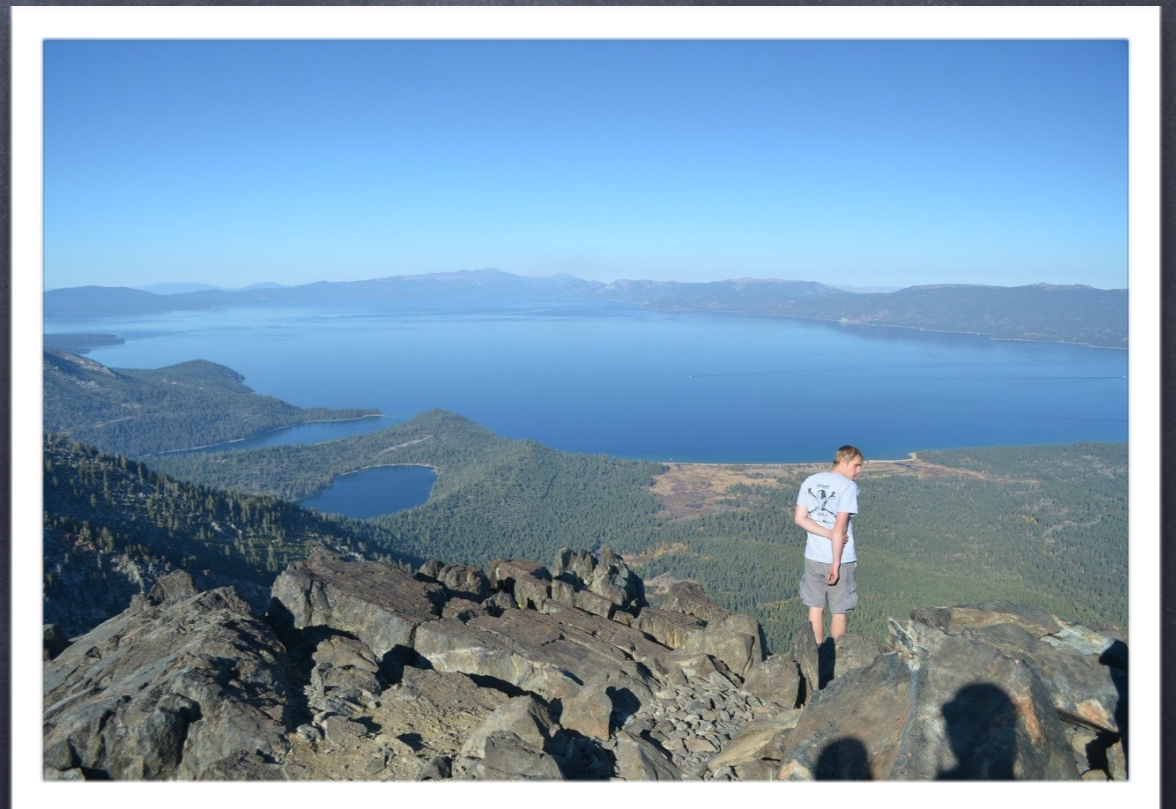
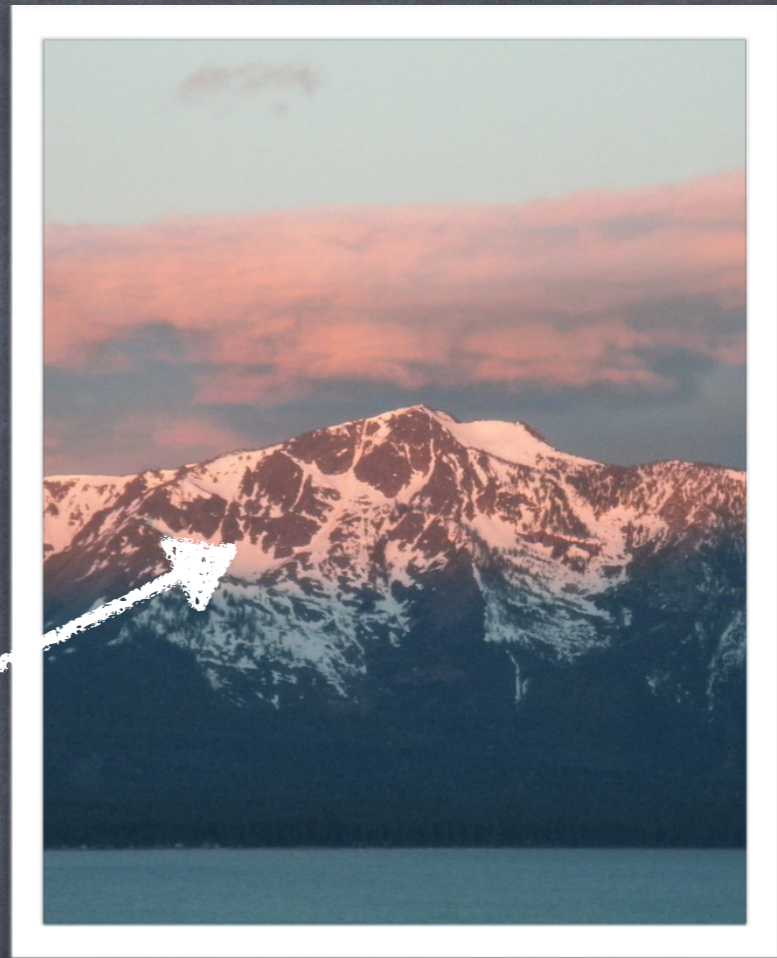
- Distance from camp: **6 miles**
- Ability Level: **moderate**
- Length: 7 miles. Full day.
- Elevation Gain: 1,800 ft
- Ages: teen - adult
- More Details: www.everytrail.com/guide/echo-lakes-amp-desolation-wilderness-lake-tahoe;
www.everytrail.com/guide/mt-ralston-peak-lake-tahoe
- Description: This hike begins at Echo Lake and connects with the Ralston peak trail to end the day at Sierra Pines Camp. Easier hike than some others because the Echo Lake trailhead starts at a higher elevation. You can hike along Echo Lake, take our canoes, or take the water taxi.



Mount Tallac

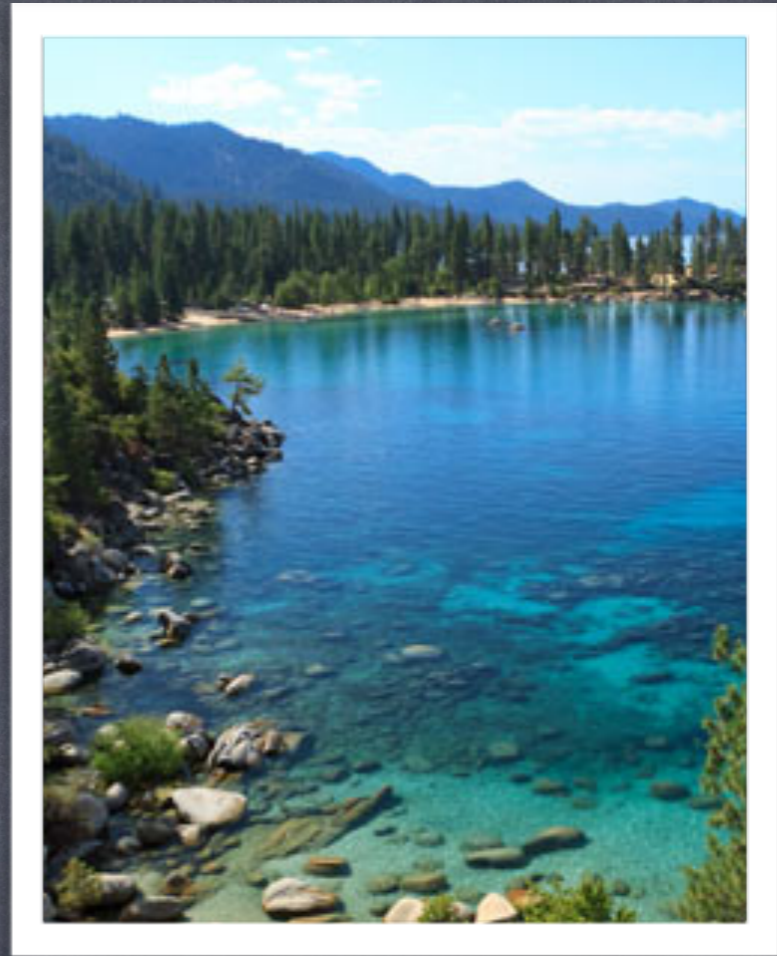
- Distance from camp: **18.9 miles**
- Ability Level: **difficult**
- Length: 9.5 miles. Full day.
- Elevation Gain: 3,500 ft
- Ages: teen - adult
- More Details:
www.everytrail.com/guide/mount-tallac-lake-tahoe
- Description: Very popular Tahoe hike with amazing views of the entire lake. The last snow to melt makes a cross that can be seen from the lake. Highly recommended!

CROSS



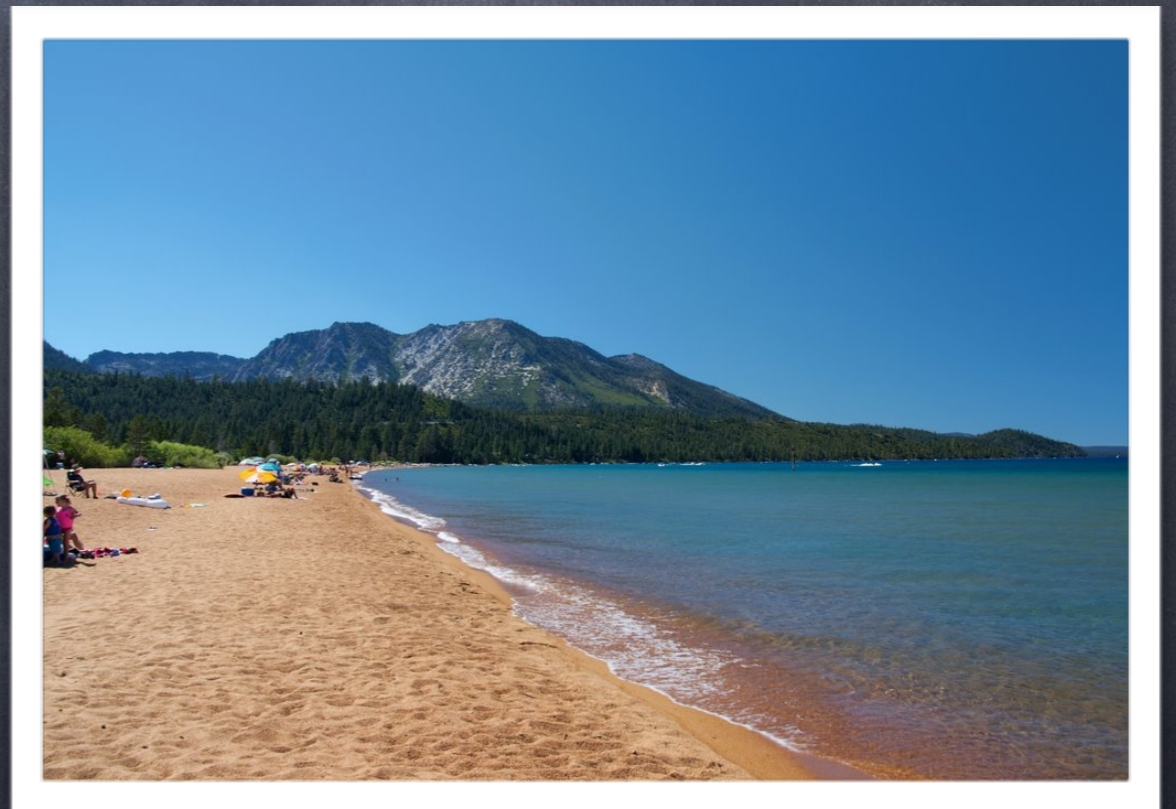
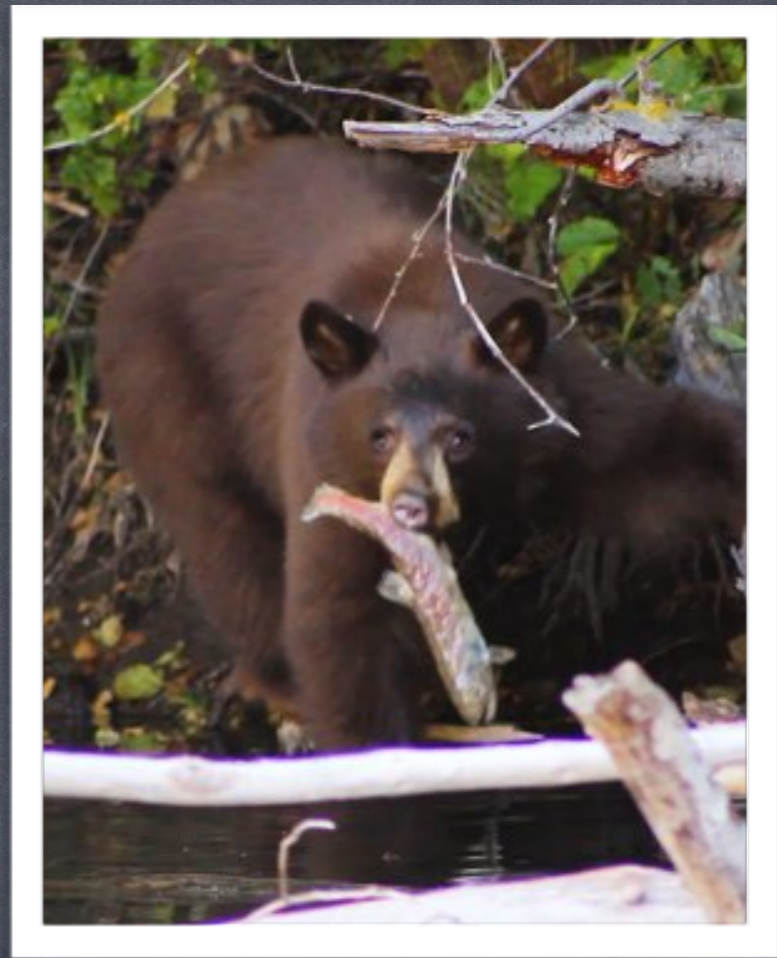
Eagle Falls

- Distance from camp: 22 miles
- Ability Level: easy
- Length: 1 mile
- Elevation Gain: 420 ft
- Ages: all ages
- More Details:
www.tahoeadventuresports.com/hikeindex/west/eaglelake.htm
- Description: Popular spot to view Tahoe's famous Emerald Bay. Lots of places to walk around or make a short hike to the waterfall. Parking is difficult on weekends.



Kiva Beach, Tallac Historic Site, Taylor Creek Visitor Center

- Distance from camp: 17 miles
- Ability Level: easy
- Length: any
- Elevation Gain: zero
- Ages: all ages
- More Details: tahoeheritage.org
- Description: A nice Tahoe beach as well as museums and historical sites. Interesting place to relax or walk around. Free parking at Kiva Beach and Tallac Historic Center. This is a great area to spot bears, eagles, spawning salmon and other Tahoe wildlife.





EMERALD BAY *

KIVA BEACH *

MT. TALLAC *

SOUTH LAKE TAHOE

HORSETAIL FALLS *

MT. RALSTON *

ECHO LAKE *

SIERRA PINES CAMP *

Created by Sarah Zuev

If you have any questions, please feel free to contact me at
916-290-2897 or info@sierrapinescamp.com

Everything in this file is for informational purposes only. Use
at your own risk. It is not intended to replace a guide or to
provide hiking routes. Please verify trails and conditions
when planning your outing. Stay safe!